

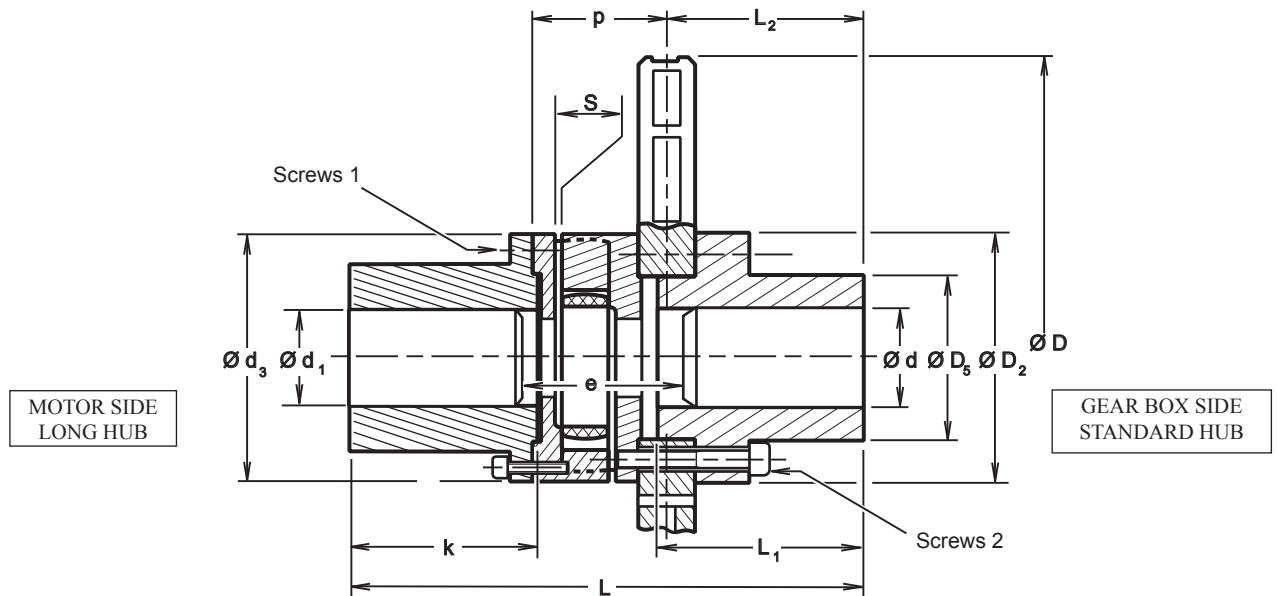
Disc brakes

Technical data and dimensions

Flexible coupling disc association

Flexible couplings **SDDL** series
 Ventilated discs thickness : 30-42mm
 Long hub on motor side
 Disc mounting and dismounting without moving
 the machines back.

- Rubber element Vkr (red)
- Rubber element Vk60D (yellow)
 (specify the type of element with order)



Degrease faces in contact between disc, hub and coupling.

Screws 1 and 2 are not tightened to the torque at the delivery.

Due to continuous development and improvement, all dimensions and characteristics are subject to change without notice.

Disc brakes

Technical data and dimensions

Flexible coupling disc association

Flexible couplings **SDDL** series
Ventilated discs thickness : 30-42mm

Long hub on motor side

Disc mounting and dismounting without moving the machines back.

- Rubber element Vkr (red)
 - Rubber element Vk60D (yellow)
- (specify the type of element with order)

Designation		Disc	315V30	315V30	355V30	395V30	445V30	495V30	550V30	625V30	705V30	795V30	625V42	795V42	995V42	
Flexible coupling SDDL			125	145	145	170	170	230	230	260	260	300	300	400	400	
Assembly	J	kg.m ²	0,162	0,175	0,263	0,41	0,639	1,234	1,546	2,765	4,56	7,143	3,927	10,304	23,754	
	Weight	kg	23,5	27,6	32,5	44	53,5	105,5	111,5	145,5	157,5	259,5	247,5	307,5	407,5	
	For use with calipers		650-5	650-5 645 45	650-5 645 45	650-5 645 45	650-5 645 45	650-5 645 45-4	650-5 645 45-3	650-5 645-4 45-3	650-5 645-4 45-3	4-3	4-3	2	2	2
	Maximum speed	tr/mn	3 000	3 000	2 700	2 400	2 100	1 800	1 800	1 500	1 300	1 200	1 400	1 400	1 000	900
	L	mm	286,5	298	298	331,5	364,5	412,5	412,5	469	469	480	492	588,5	588,5	
	Tolerance on S and L	mm	3	3	3	3	3	3,5	3,5	4	4	4	4	4	4	
Disc	D	mm	315	315	355	395	445	495	550	625	705	795	625	795	995	
	D2	mm	125	125	145	165	175	220	220	235	265	300	300	380	380	
	D5	mm	80	80	95	105	110	150	150	150	180	210	210	260	260	
	L2	mm	102	102	102	102	135	135	135	135	135	135	141	141	141	
	L1	mm	107	107	107	107	140	140	140	140	140	140	140	140	140	
	d (pilot bore)	mm	-	-	-	-	-	-	-	-	-	-	40	40	40	
	d max keyed or shrink fit	mm	50	50	60	70	70	100	100	100	120	130	140	180	180	
Coupling	d3	mm	125	145	145	170	170	230	230	260	260	300	300	400	400	
	e min	mm	69,5	81	81	84,5	84,5	102,5	102,5	119	119	130	142	158,5	158,5	
	k	mm	110	110	110	140	140	170	170	210	210	210	210	250	250	
	p	mm	76	87,5	87,5	91	91	110	110	126,5	126,5	137,5	143,5	160	160	
	d1 max keyed	mm	55	65	65	75	75	110	110	125	125	140	140	160	160	
	S	mm	5	5	5	5	5	7	7	8	8	8	8	8	8	
	Max. torque (Cp) in Nm	Rubber element Vkr		750	1200	1 200	1 900	1 900	5 150	5 150	7 950	7 950	11 700	11 700	26 700	26 700
		Rubber element Vk60D		1 110	1 800	1 800	2 850	2 850	7 740	7 740	11 940	11 940	17 550	17 550	40 050	40 050
	Transmissible torque (Ct) (Ct: motor nominal torque)			Ct ≤ Cp/k												
				k min temperature k=3 ≤ 40°C k=4 < 80°C k=6 ≤ 80°C												
			Cd < Cp rate ≤ 120starts/h ≤ 240starts/h ≤ 600starts/h													
Tightening torque on screws (1)		Nm	49	85	85	85	85	135	135	210	210	425	425	730	730	
Tightening torque on screws (2)*		Nm	49	49	86	135	210	290	290	410	550	710	710	1 450	1 450	

Screws (1) and (2) greased under head and on thread and not tightened to the torque at the delivery.

Cd = motor starting torque.

Due to continuous development and improvement, all dimensions and characteristics are subject to change without notice.